

DC
series

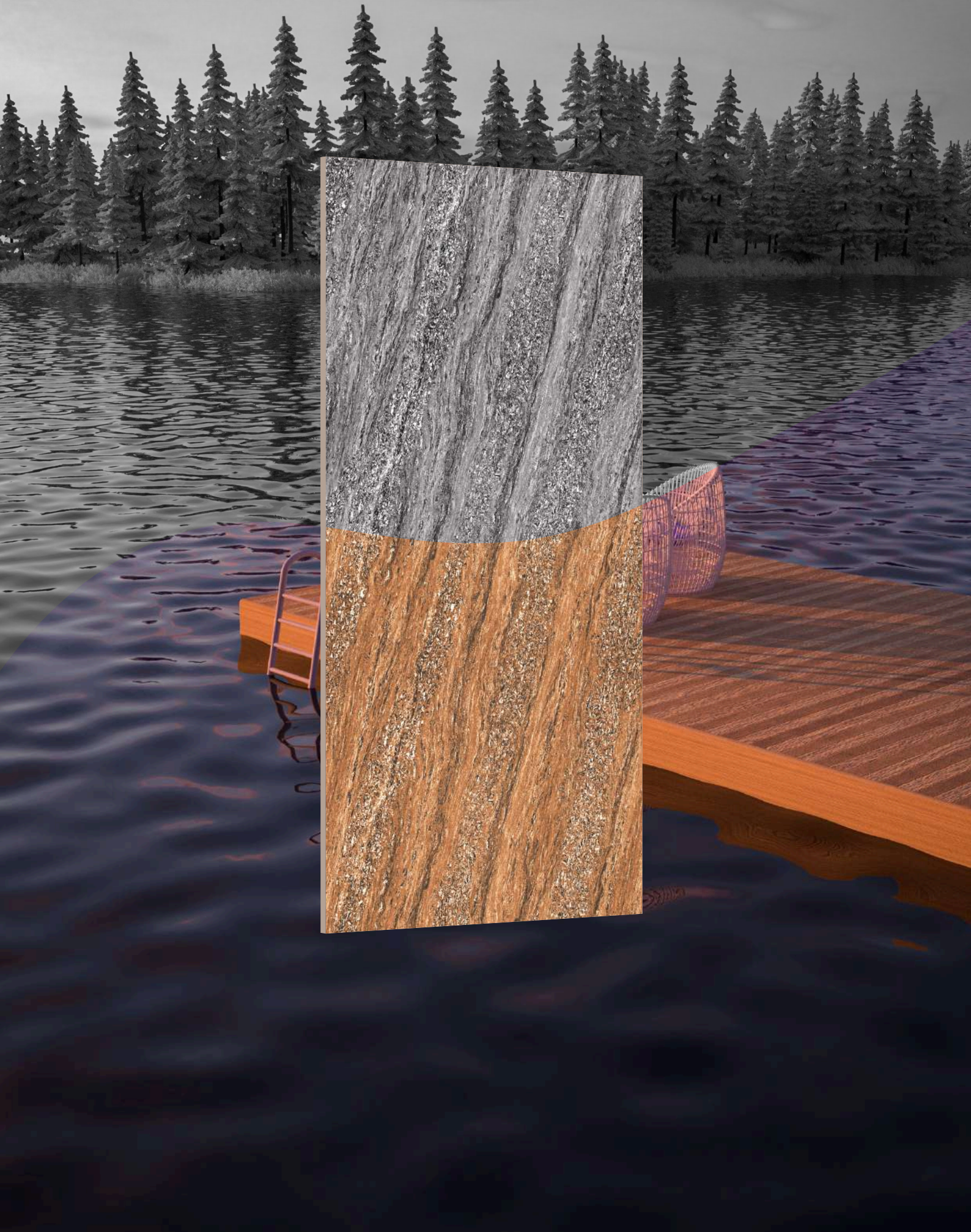
intile[®]
ultimate surfaces



Glamorous And
Luxurious Backdrop.

DC
series

intile[®]
ultimate surfaces



ABOUT US

INTILE CERAMIKA brings to you premium ceramic tiles that are detailed with perfection. Each tile is made using state-of-the-art technology making them strong, durable & easy to maintain.

Intile Ceramika range of luxurious ceramic tiles integrates technological expertise with exquisite designs.

PRODUCT FORMAT

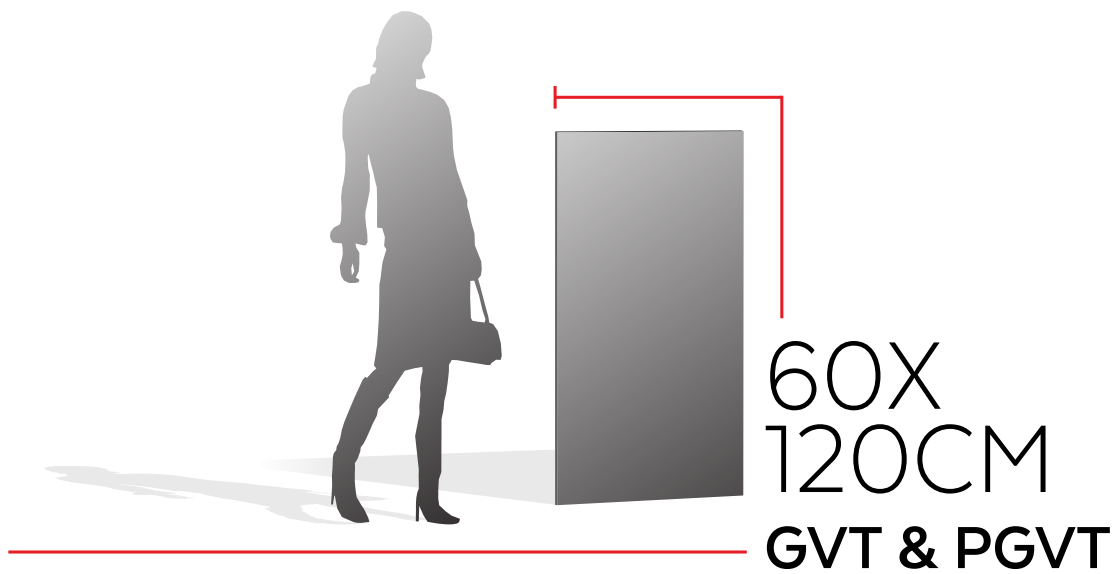
Size:
600X1200MM

Finish:
GLOSSY

Elevate your space with our exquisite collection of high-quality DC tiles. From timeless classics to contemporary designs, we offer a wide range of options to transform your floors and walls into stunning works of art.

DC
series

intile[®]
ultimate surfaces



DOUBLE CHARGE

SERIES

APPLICATION



Residential



Shops



Malls



Public Spaces



Offices And
Headquarters



Hospitality



Restaurant



Airports



Train Stations

Greet a complete home solution product range with us. One of the most popular practices for modern-day homes is to extend the flooring of the Living room to the kitchen.

A well designed Glossy finish tiles that will perfectly complement your trendy space.

FEATURE



Water Proof



Resistant To Scratches



Resistant To High Temperatures



Easy To Clean



Resistant To Bending



Resistant To UV Rays

The parameter used for slip resistance is called the Coefficient of Friction (COF). The higher the COF, the better the slip resistance of the tiles. Unglazed tiles, mosaic tiles (with many grout joints) and rough surfaced tiles are less slippery when compared with smooth and Glossy glazed tiles.



DC-3001



DC-3001

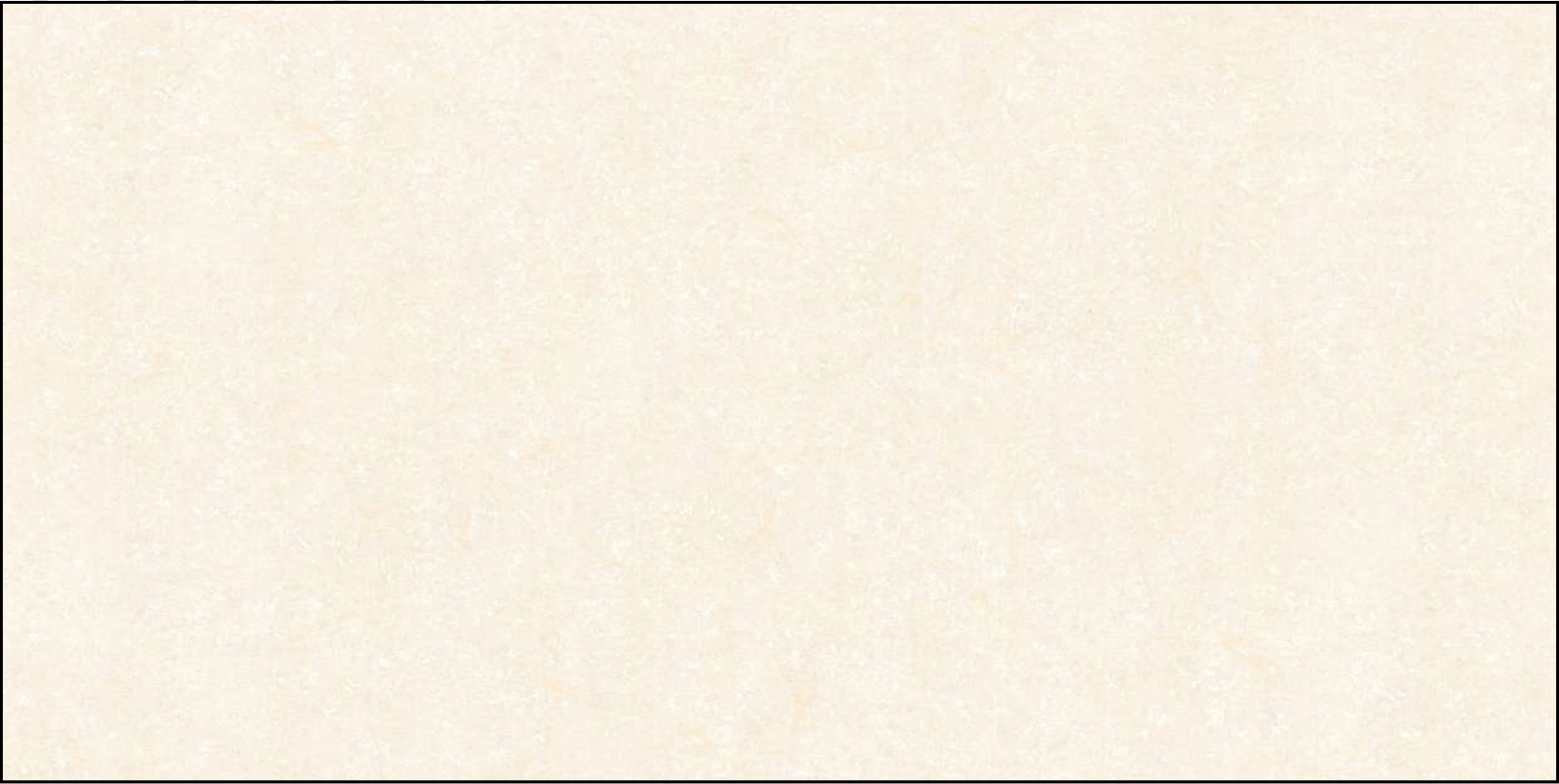


SIZE:
600X1200MM

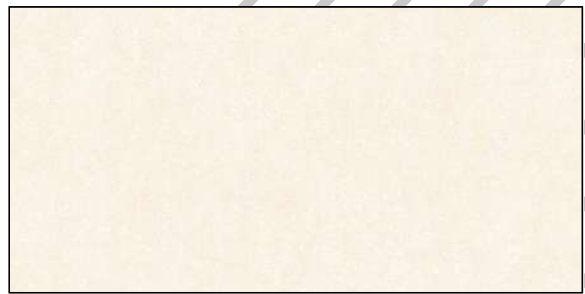
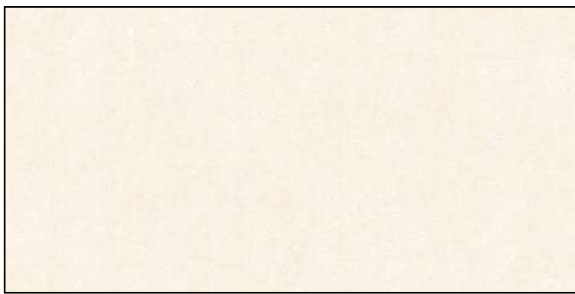
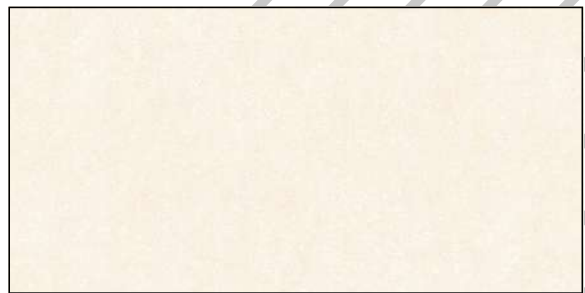
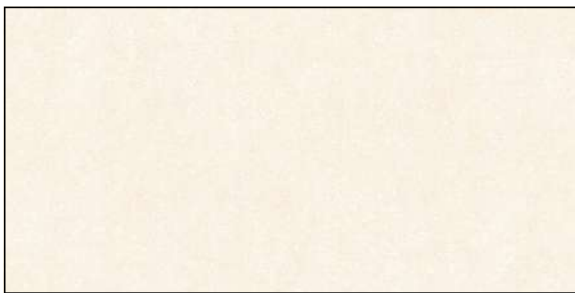
Finish:
Glossy

DC
series

intile[®]
ultimate surfaces



DC-3002



SIZE:
600X1200MM

Finish:
Glossy

DC
series

intile[®]
ultimate surfaces



DC-3003

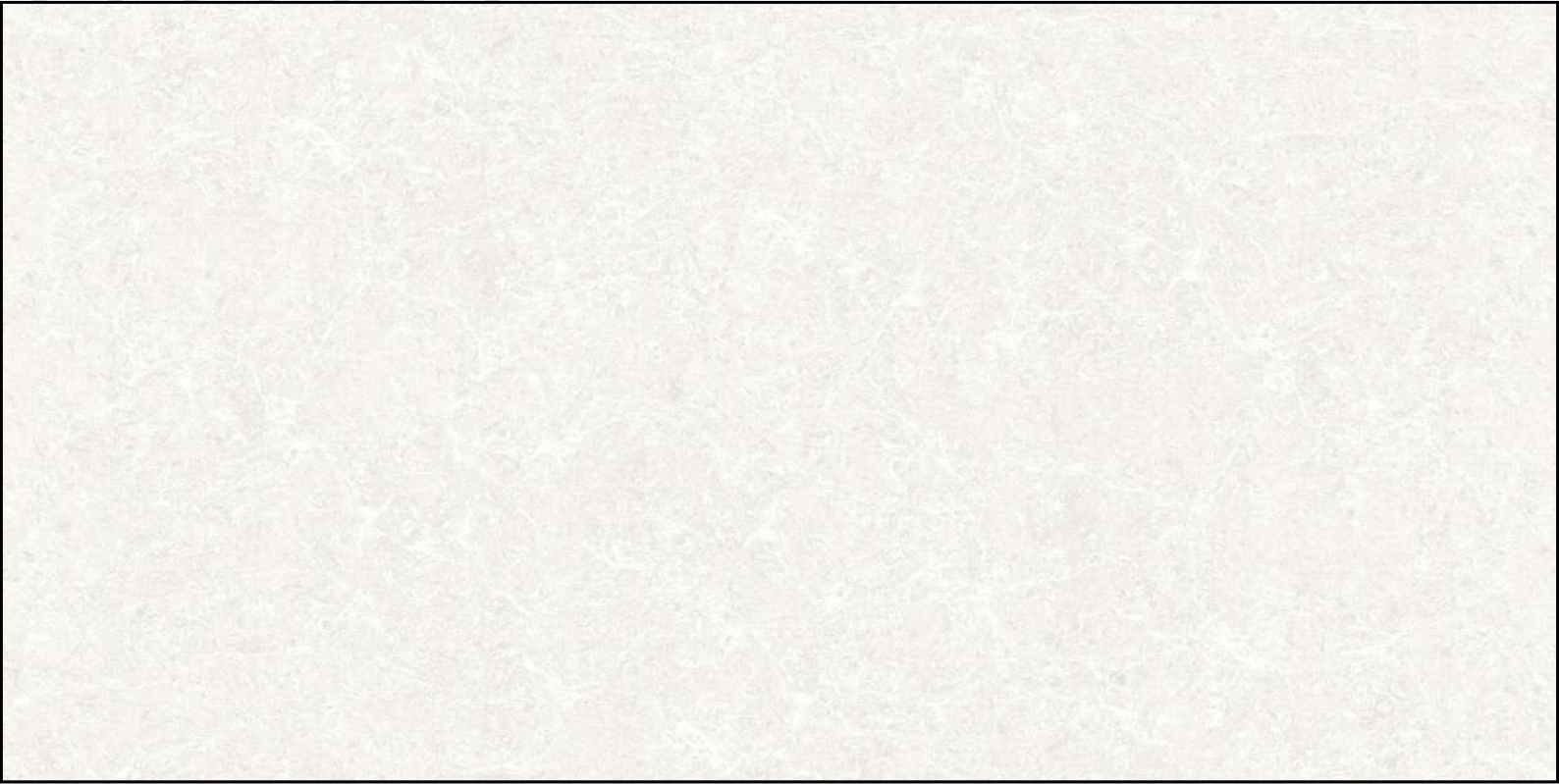


SIZE:
600X1200MM

Finish:
Glossy

DC
series

intile[®]
ultimate surfaces



DC-3004



SIZE:
600X1200MM

Finish:
Glossy

DC
series

intile[®]
ultimate surfaces



DC-3005



SIZE:
600X1200MM

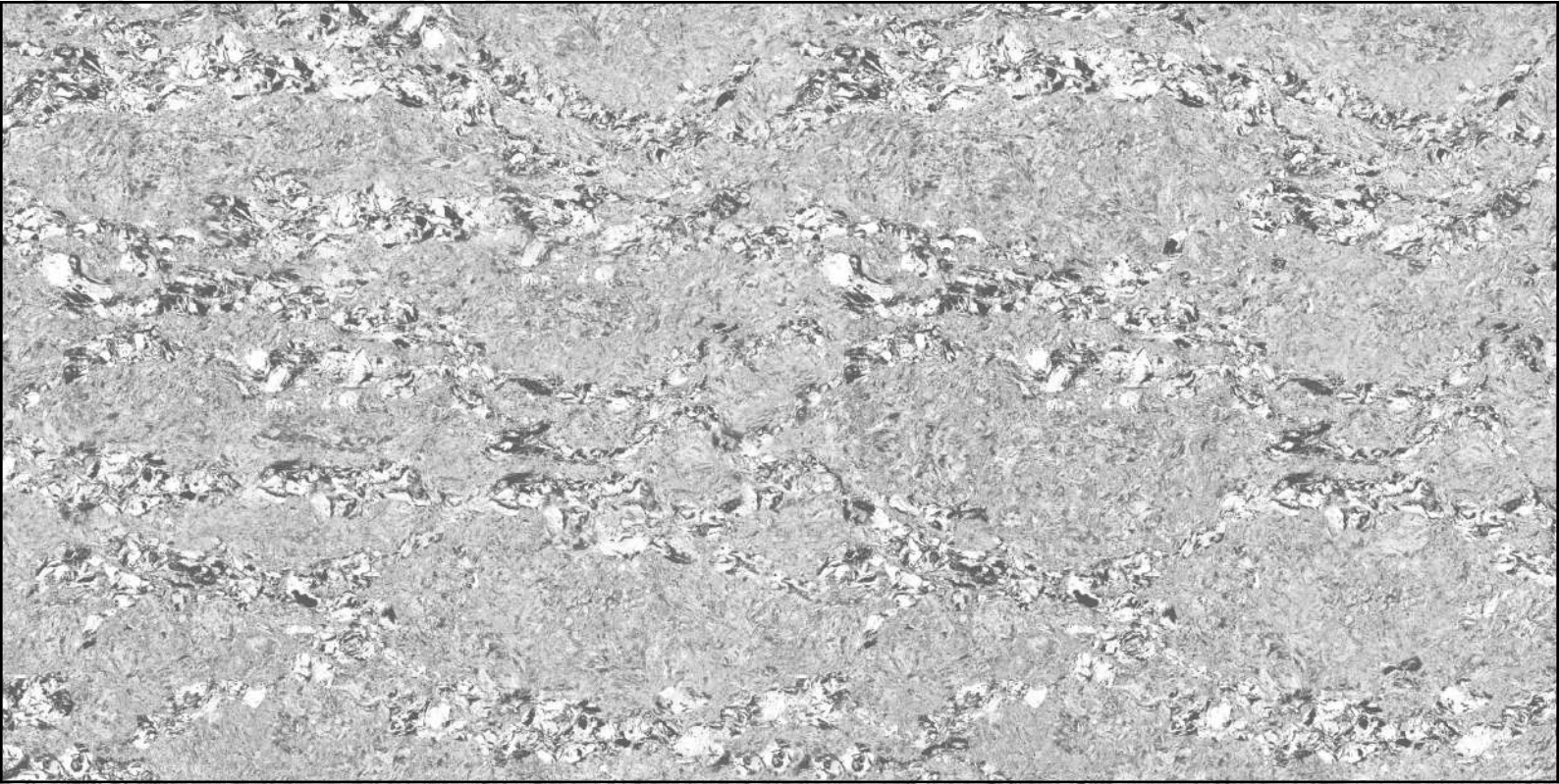
Finish :
Glossy



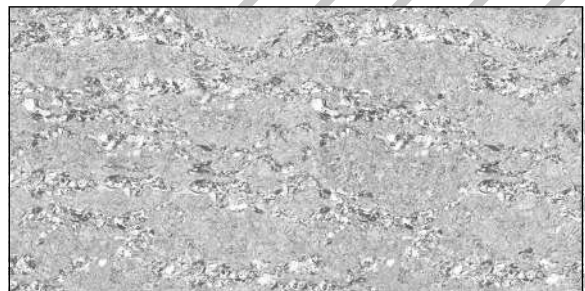
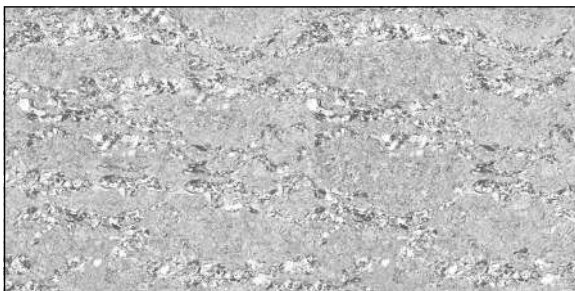
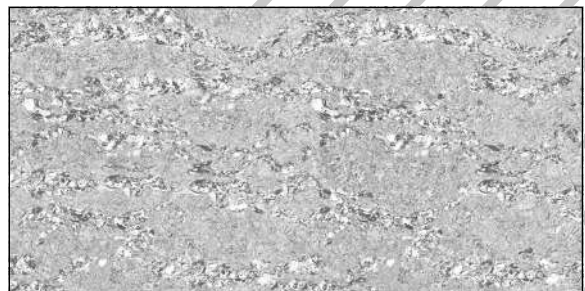
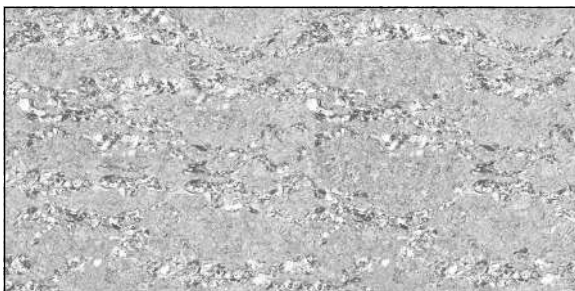
DC-3006

DC
series

intile[®]
ultimate surfaces



DC-3006



SIZE:
600X1200MM

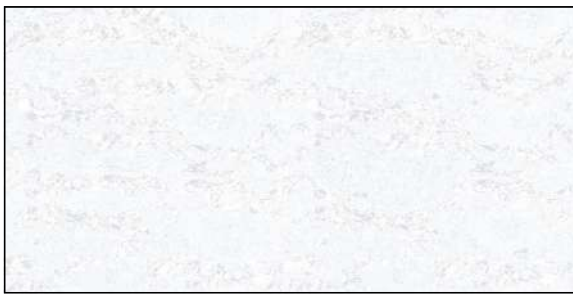
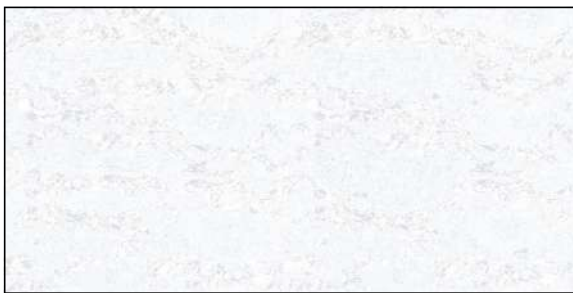
Finish:
Glossy

DC
series

intile[®]
ultimate surfaces



DC-3007

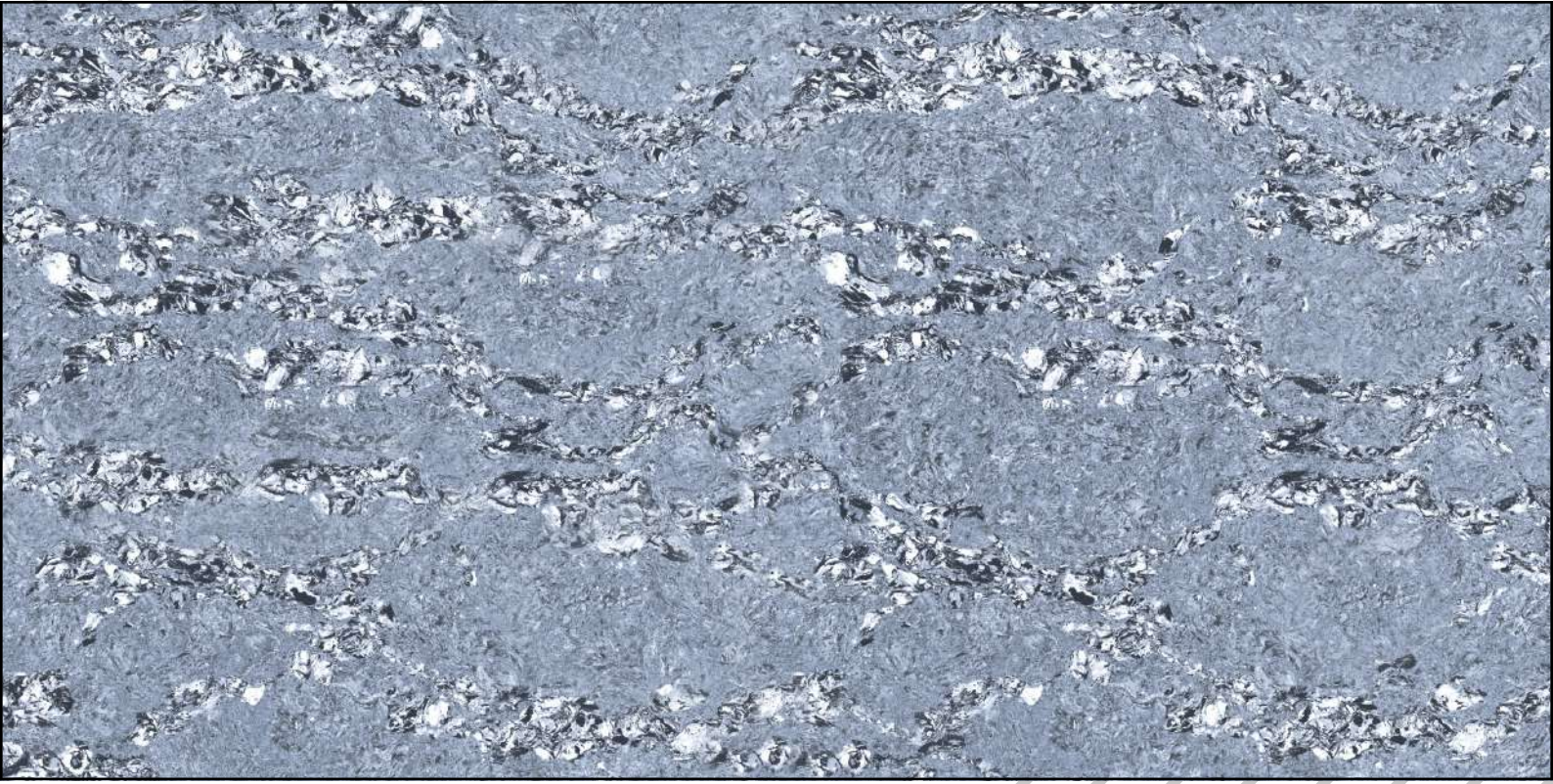


SIZE :
600X1200MM

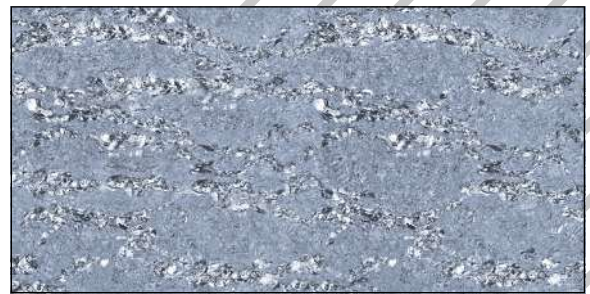
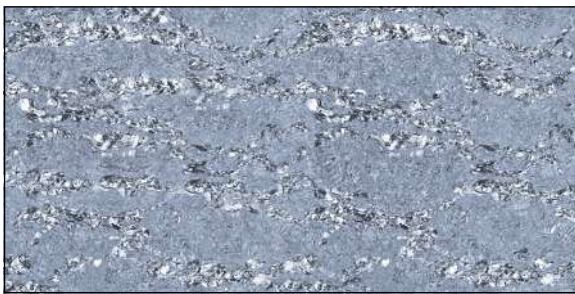
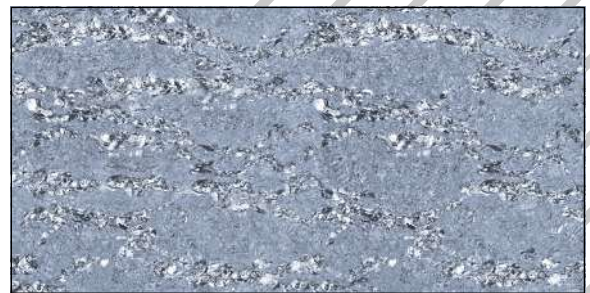
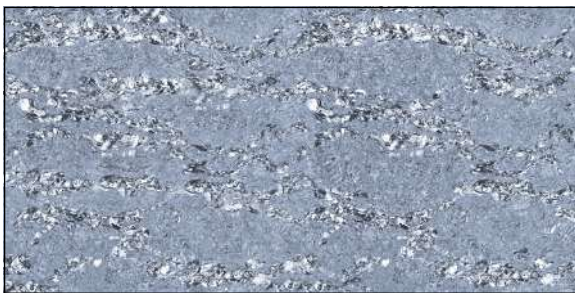
Finish :
Glossy

DC
series

intile[®]
ultimate surfaces



DC-3008

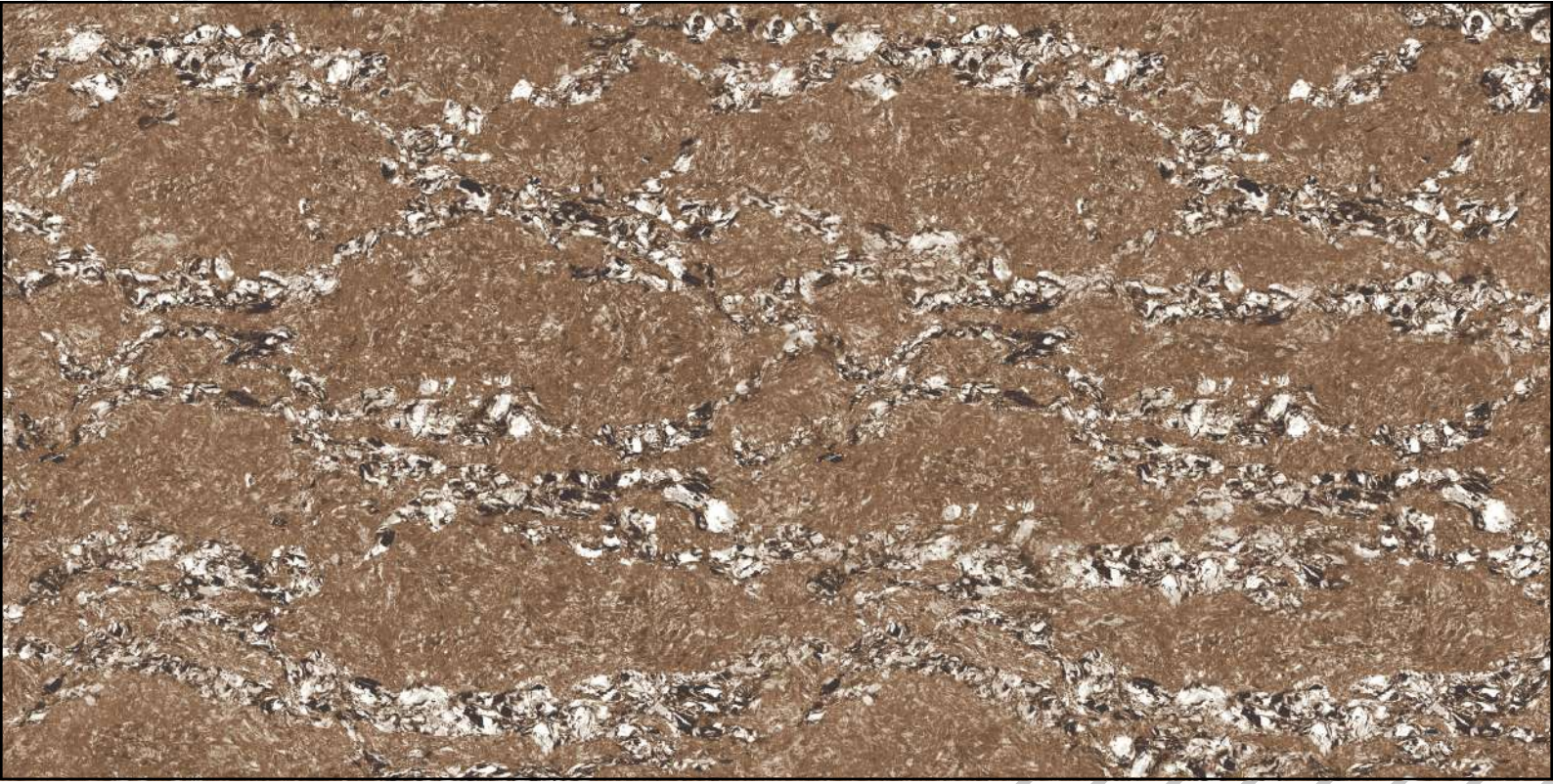


SIZE:
600X1200MM

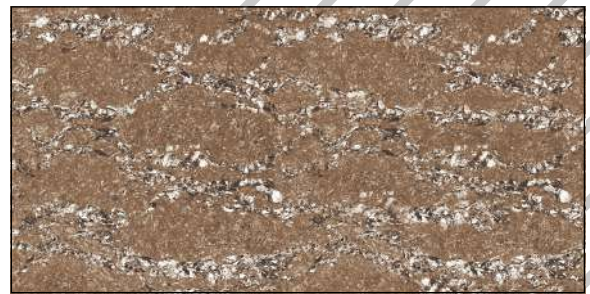
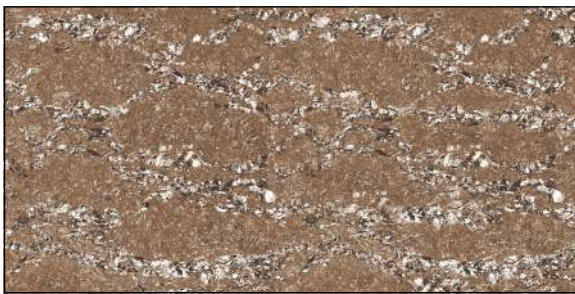
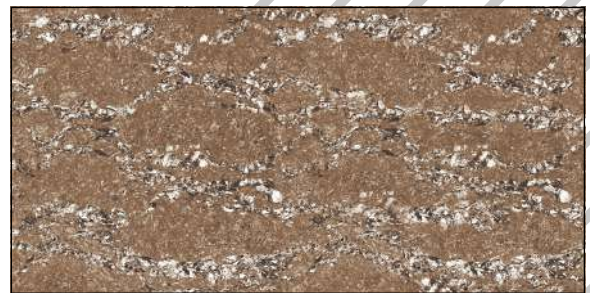
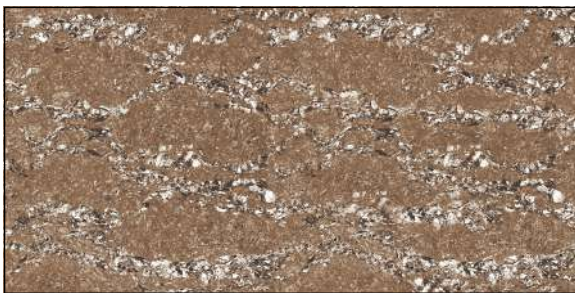
Finish:
Glossy

DC
series

intile[®]
ultimate surfaces



DC-3009



SIZE:
600X1200MM

Finish :
Glossy

DC
series

intile[®]
ultimate surfaces



DC-3010



SIZE:
600X1200MM

Finish:
Glossy



DC-3011

DC
series

intile[®]
ultimate surfaces



DC-3011



SIZE:
600X1200MM

Finish:
Glossy

DC
series

intile[®]
ultimate surfaces

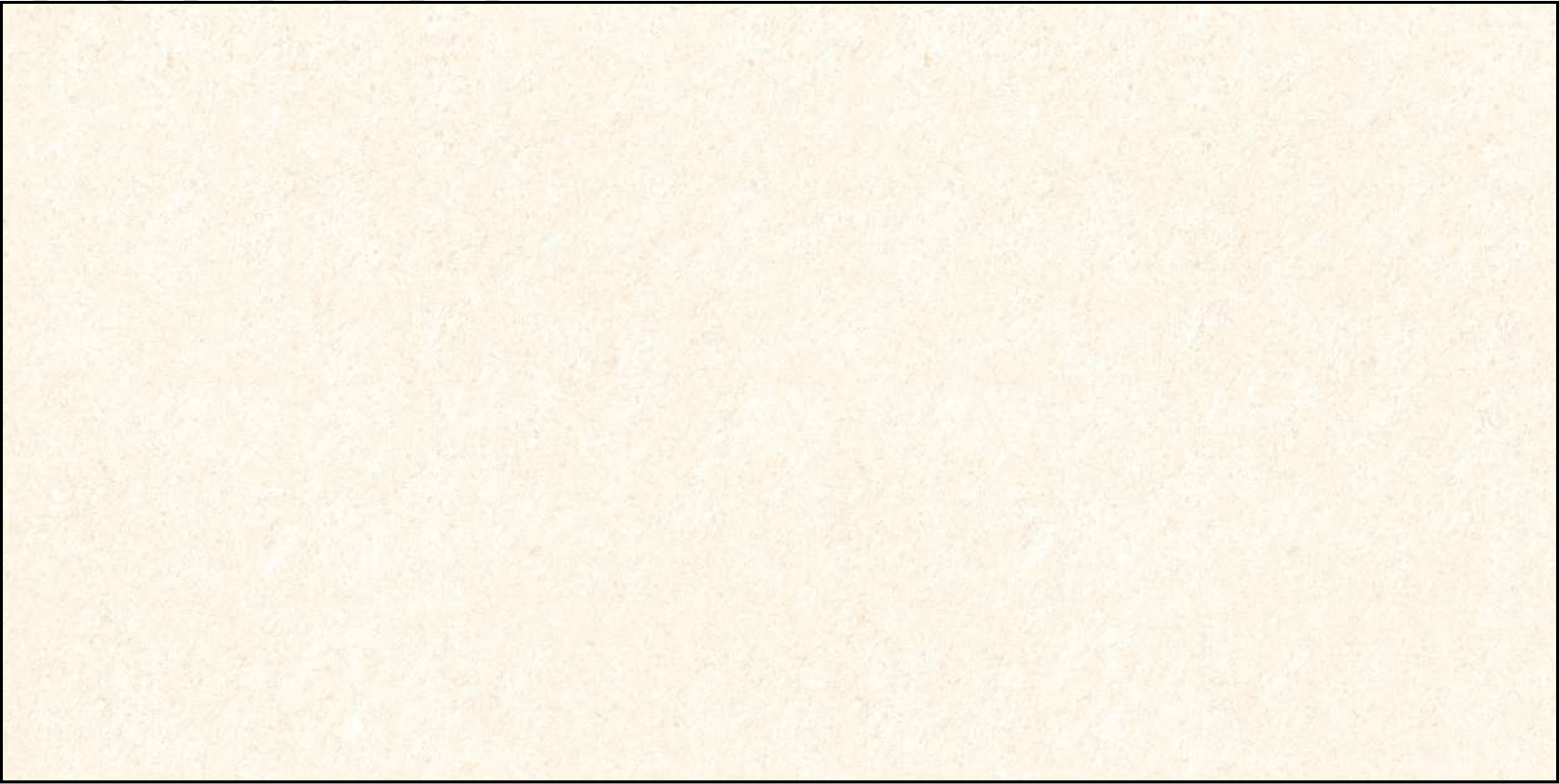


DC-3012



SIZE:
600X1200MM

Finish:
Glossy



DC-3013

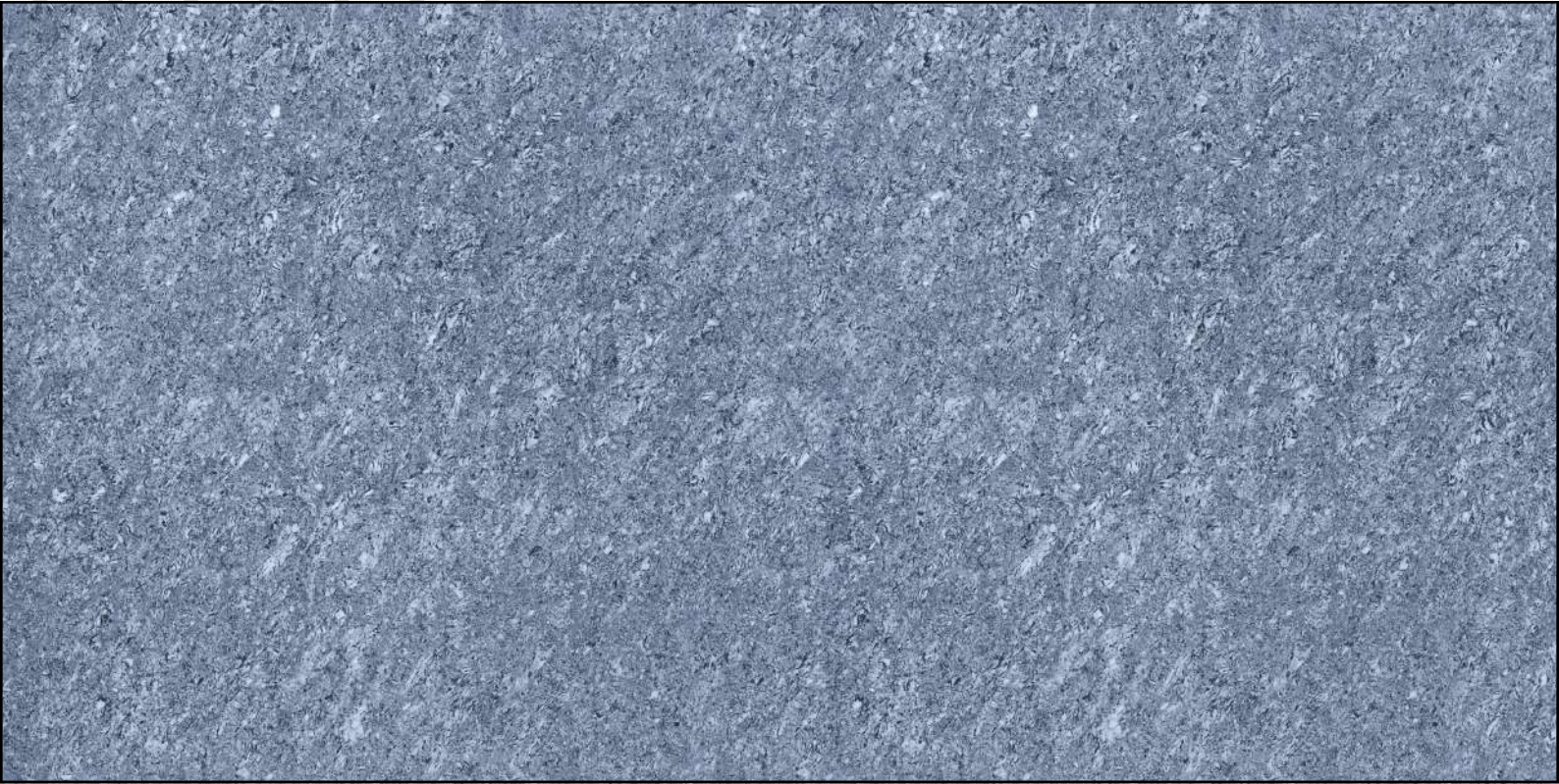


SIZE:
600X1200MM

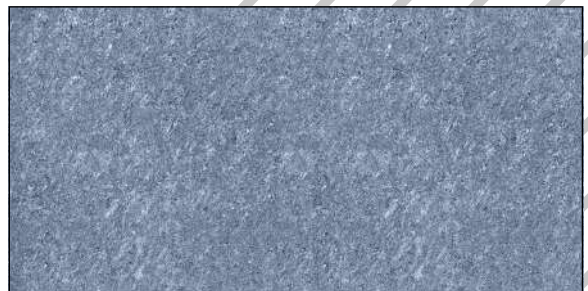
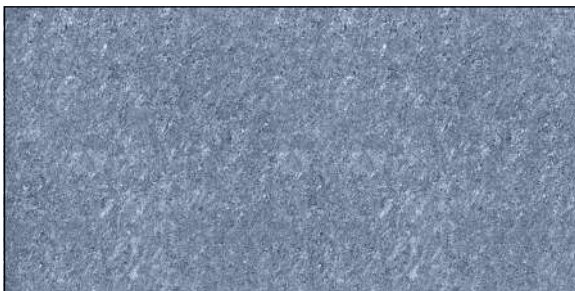
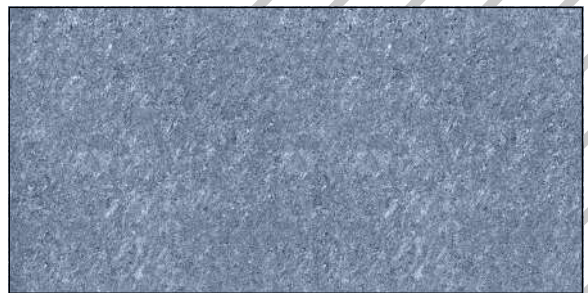
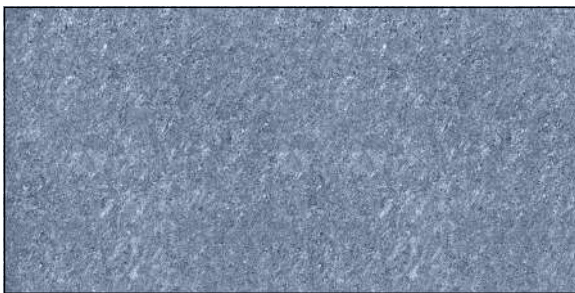
Finish:
Glossy

DC
series

intile[®]
ultimate surfaces



DC-3014

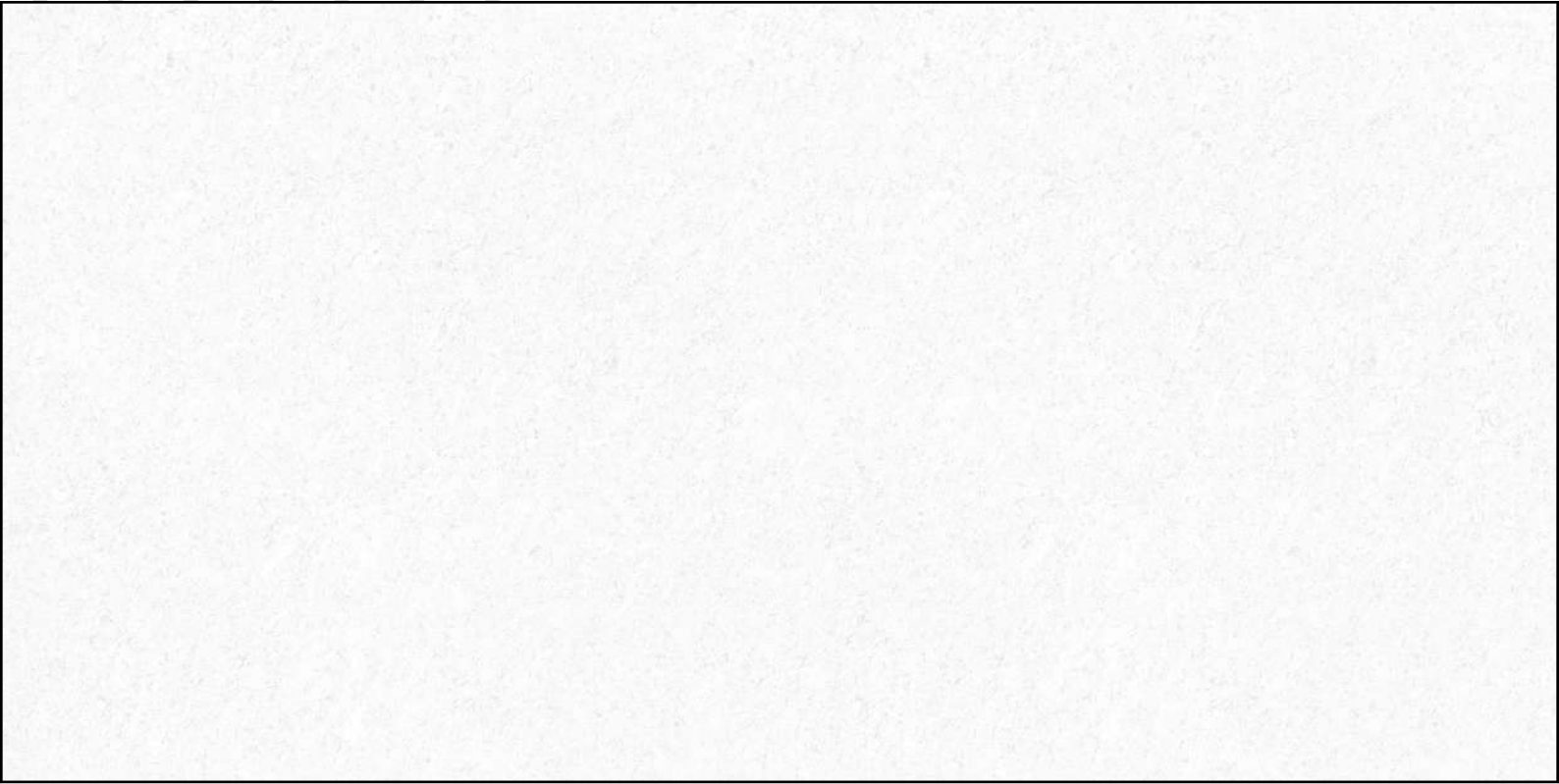


SIZE:
600X1200MM

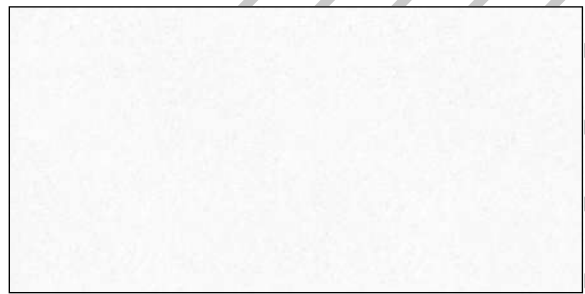
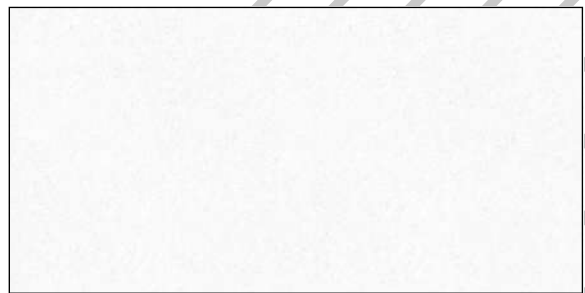
Finish :
Glossy

DC
series

intile[®]
ultimate surfaces



DC-3015



SIZE :
600X1200MM

Finish :
Glossy



DC-3016



DC-3016



SIZE:
600X1200MM

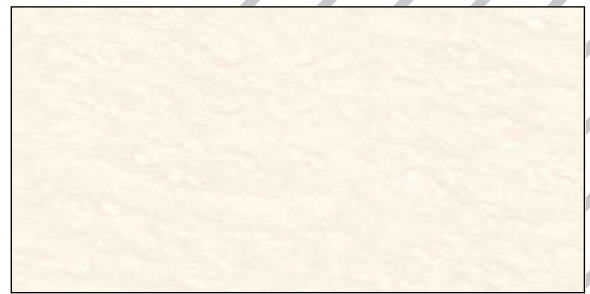
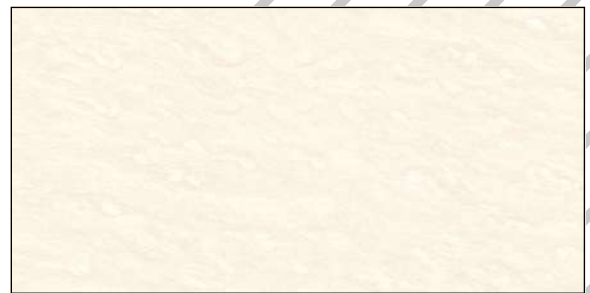
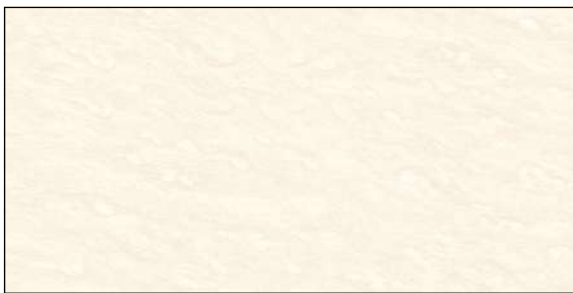
Finish :
Glossy

DC
series

intile[®]
ultimate surfaces



DC-3017



SIZE :
600X1200MM

Finish :
Glossy



DC-3018



SIZE :
600X1200MM

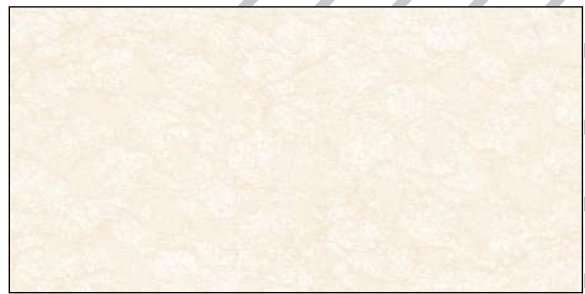
Finish :
Glossy

DC
series

intile[®]
ultimate surfaces



DC-3019

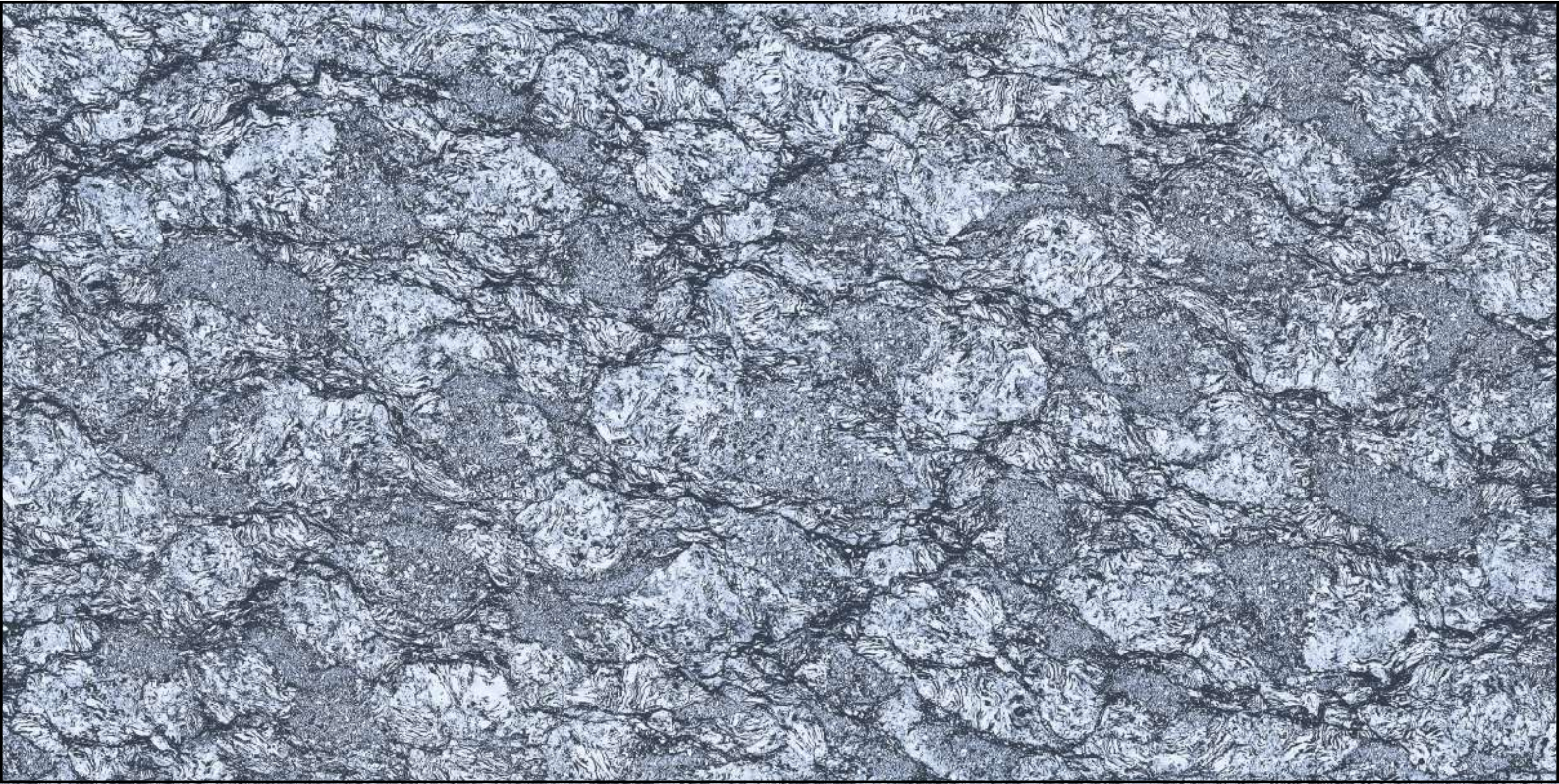


SIZE:
600X1200MM

Finish:
Glossy

DC
series

intile[®]
ultimate surfaces



DC-3020



SIZE:
600X1200MM

Finish :
Glossy



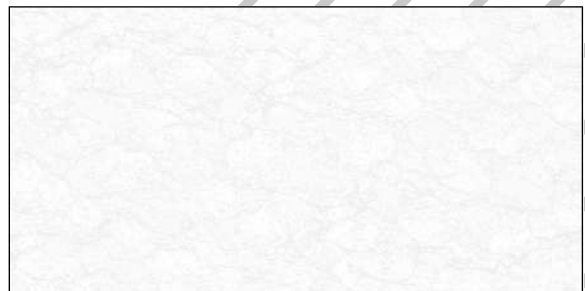
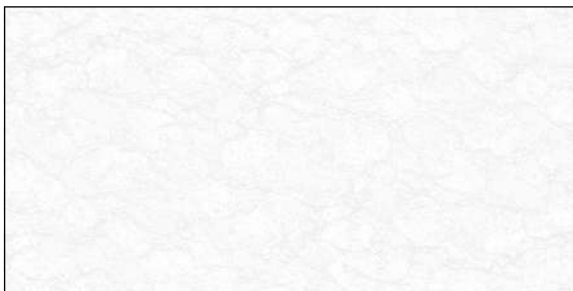
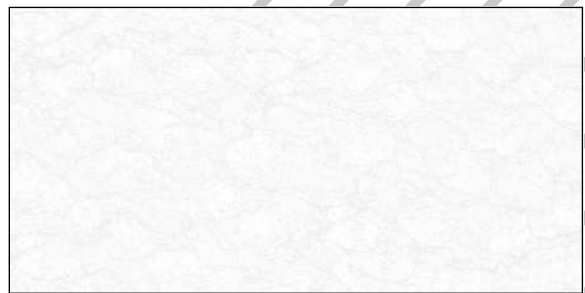
DC-3021

DC
series

intile[®]
ultimate surfaces



DC-3021

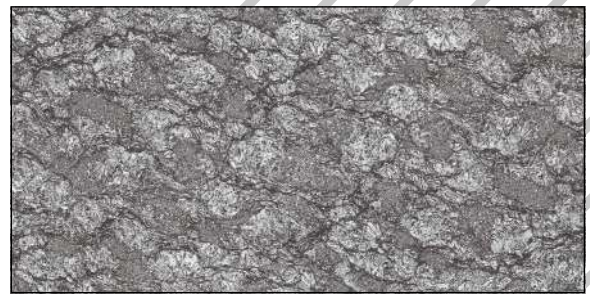
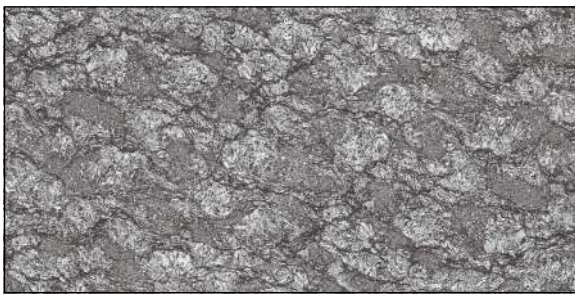
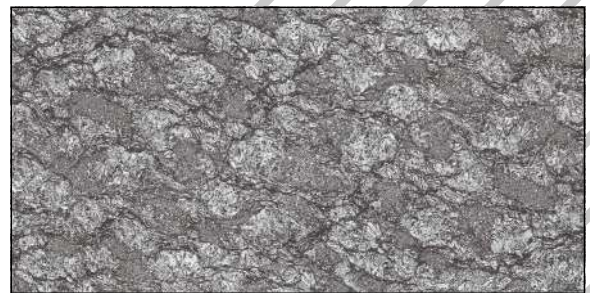
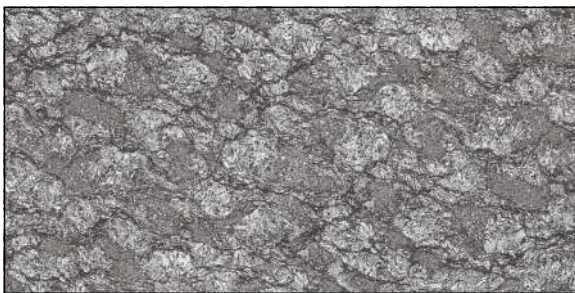


SIZE:
600X1200MM

Finish:
Glossy



DC-3022



SIZE:
600X1200MM

Finish :
Glossy

DC
series

intile[®]
ultimate surfaces



DC-3023



SIZE:
600X1200MM

Finish :
Glossy

DC
series

intile[®]
ultimate surfaces



DC-3024



SIZE :
600X1200MM

Finish :
Glossy

DC
series

intile[®]
ultimate surfaces



DC-3025



SIZE:
600X1200MM

Finish:
Glossy



DC-3026

DC
series

intile[®]
ultimate surfaces



DC-3026



SIZE:
600X1200MM

Finish :
Glossy

DC
series

intile[®]
ultimate surfaces



DC-3027



SIZE:
600X1200MM

Finish:
Glossy

DC
series

intile[®]
ultimate surfaces



DC-3028



SIZE:
600X1200MM

Finish:
Glossy

DC
series

intile[®]
ultimate surfaces



DC-3029



SIZE:
600X1200MM

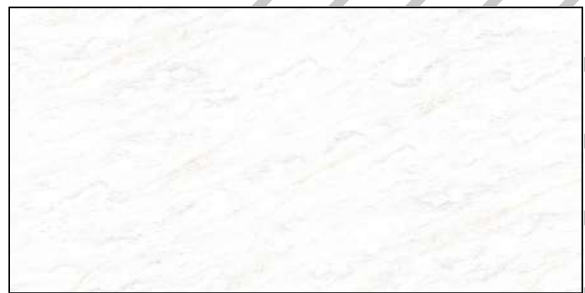
Finish:
Glossy

DC
series

intile[®]
ultimate surfaces



DC-3030



SIZE:
600X1200MM

Finish:
Glossy



DC-3031

DC
series

intile[®]
ultimate surfaces



DC-3031



SIZE:
600X1200MM

Finish:
Glossy

DC
series

intile[®]
ultimate surfaces



DC-3032

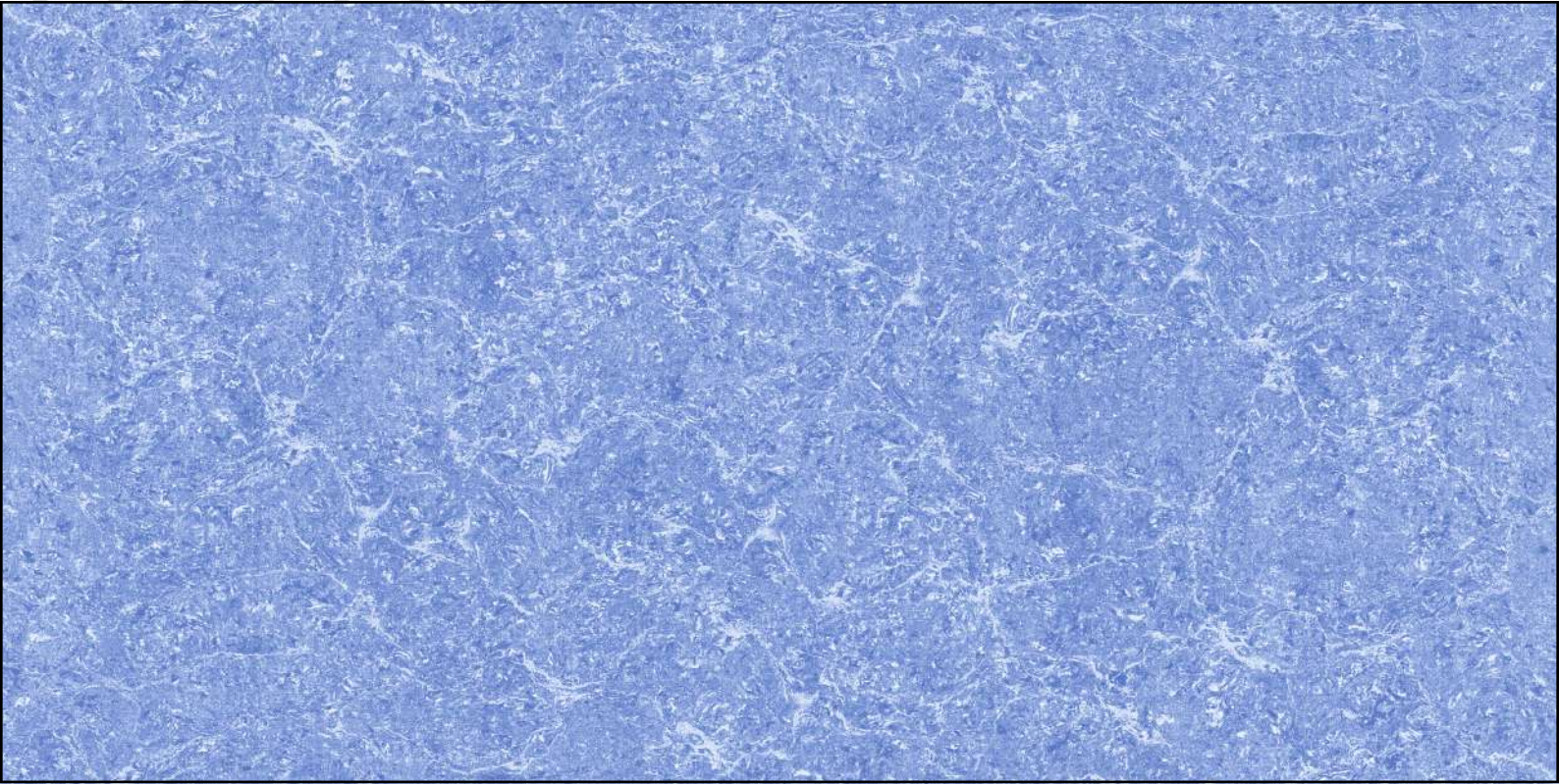


SIZE:
600X1200MM

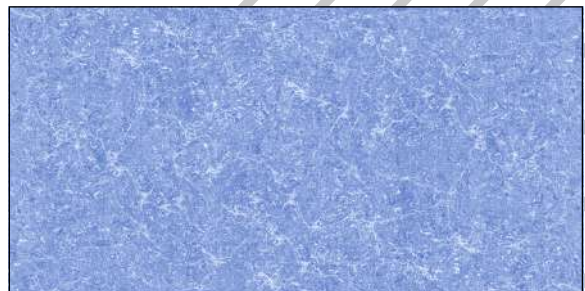
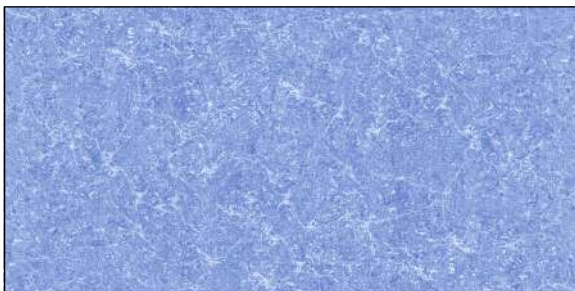
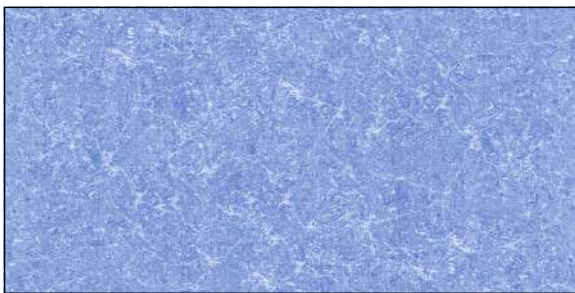
Finish:
Glossy

DC
series

intile[®]
ultimate surfaces



DC-3033



SIZE:
600X1200MM

Finish :
Glossy


intile[®]
ultimate surfaces



INTILE CERAMIKA

Opp. Virat Nagar, Survey No-18 P1/P1, Jetpar Road, Haripar, Morbi, Gujarat, 363630

 info@intile.in

 www.intile.in